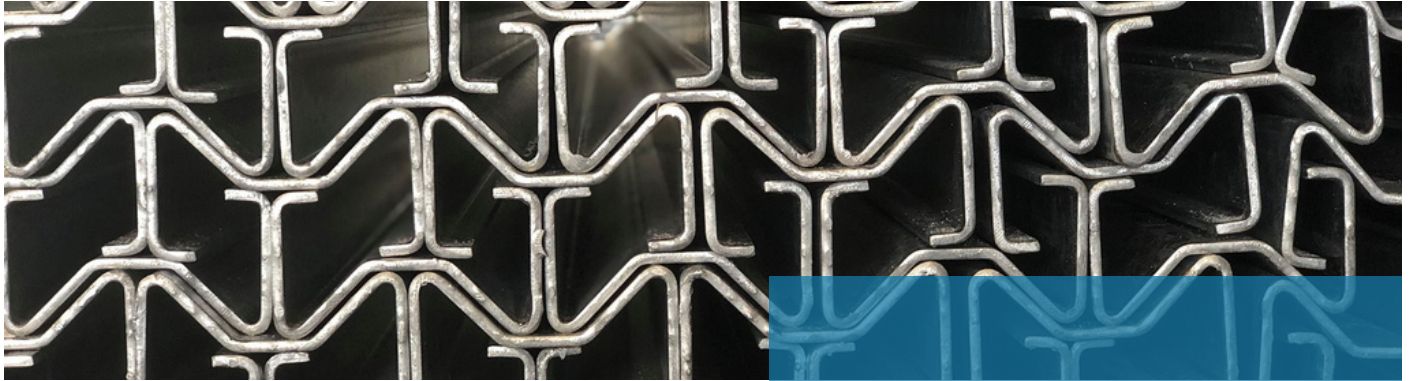




# INPROFILE 2000

DESIGNERS & MANUFACTURES OF COLD ROLLED PROFILES



## About Us

Inprofile2000 (Pty) Ltd is a family owned business based in Johannesburg South that designs & rolls over 350 types of profiles for key sectors within different industries. These include construction, solar, shelving & racking, cable support systems, truck & trailer as well as security to name a few amongst a host of others.

The extensive machine capabilities, constant improvement & innovative solutions see Inprofile as one of the only flexible & accommodating manufacturers country wide. As a privately owned company we pride ourselves in hosting extremely competitive prices which are volumetric based. We are an ISO 9001: 2015 company.



## WHAT WE DO?

- Cable Support Systems
- Fencing Systems
- Deck Support Systems
- Expandable Security Doors
- General Design Of Open Steel Systems
- Green House Profiles
- Mezzanine Floors
- Open Seam Tubing
- Racking
- Road Crash Barriers
- Roller Door Profiles
- Shelving
- Solar Support Structures
- Structural Open Sections
- Wire Mesh Cable Support Systems

## Overview

### Coil Processing

We specialise in de-coiling, Cut to length, Edge trimming, Slitting and Blanking.



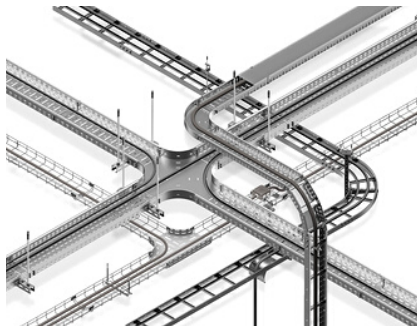
### Racking & Shelving

Inprofile provides the shelving and racking industry with beams, uprights, bracing and cut to length blanks. We specialise in having the fastest turn over from order to delivery in box beams and sigma beams.



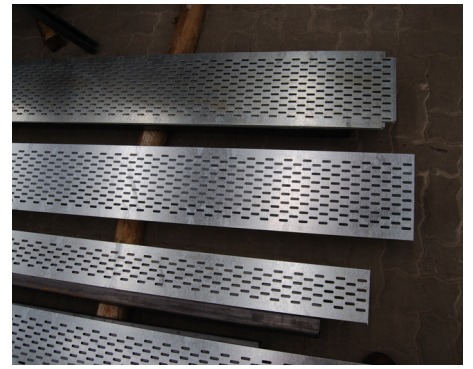
### Cable Management Systems

A cable management system is a set of sections and fittings which form a ridge structure to secure or support electrical cables. It allows the safe transport of wires across open spaces and is effectively the structural component, or skeleton of a buildings electrical system.



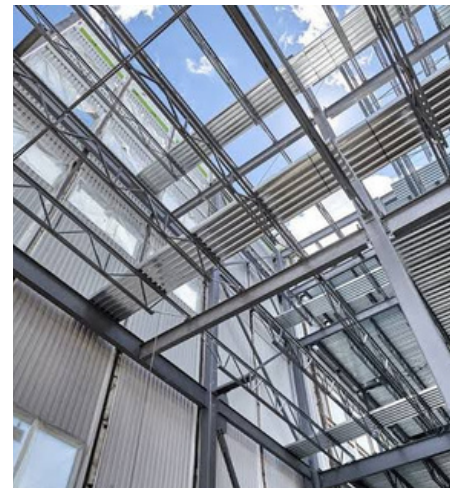
### Cold Formed Structural Steel

Design and manufacturing of u-channels, lipped channels, top hats, lipped angles and angles that are customisable in dimensions including length, width, thickness, material, flange height and punching to drawing.



### Design & Manufacturing Of Open Sections

Inprofile 2000 prides itself on being the local leader in both design and manufacturer of open steel sections. To date Inprofile has designed and produced over 12 million meters of customisable sections to it's customers.



011 908 1903



[Inprofile2000.co.za](http://Inprofile2000.co.za)



[sales@inprofile2000.co.za](mailto:sales@inprofile2000.co.za)  
[orders@inprofile.co.za](mailto:orders@inprofile.co.za)



Cert: 320/1

SANS 1350:2005 Edition 1.02  
Guardrails



ISO  
9001:2015

Quality  
Management

Cert: 2016062801